

Proposed Tour Package

The total tour price (excluding the uniform package, Hotel (approx. \$40.00 each night) & unforeseen fuel hikes) should include:

- All airfare and inland travel.
- Some meals
- Players Package – jersey, socks, clothing, hockey bag. All players must have black gloves, pants and helmet. (No painted helmets or stripes on pants.)
- Sightseeing Tours, Celebration Banquets and Cultural Exchange
- All ice times
- Air miles for one free flight anywhere in North America upon return (you must join an air miles plan e.g. Aero Plan, before the tour).

Selection will be on a **“first come, first serve”** basis. Players will be guaranteed 7 games and will have to sign a Team Contract.

A **non-refundable** deposit of \$500 is required by each person, the balance must be paid no later than April 30th, 2011. Cash or cheque should be made payable to: Canadian Moose Org. Inc., “Moose Headquarters”
216 Park Avenue, Newmarket, Ontario L3Y 1V2.

If an individual decides to drop out later, they forfeit their deposit unless they substitute a suitable player (or supporter) to take their place.

We encourage players and supporters to pursue Corporate Sponsorship and fund raising ventures to defray the cost of the tour. A Marketing Package is available to help raise funds. From funds raised 80% go to the individual player or supporter and the remaining 20% goes to Team Administration costs.

We are seeking sponsorship to defer some of the player package costs.

All supporters and family members are welcome
You win on the exchange rate \$1.00 Cdn to \$1.30 NZ at the time of producing this flier.

For More Information Contact:

Mark Sadgrove - Founder of the Canadian Moose

Phone: 905 8985700

Email: mark@canadianmoose.org



Kerry Goulet – Hockey Promoter:

Phone: 416 828 2929

Email: goulet29@29sports.com

Website: <http://www.29sports.com/>



Dr. Ashley Lye - the 'Kiwi':

Phone: 289 264 0056

Email: ashley.lye@gmail.com

Gareth Webber or Craig Douglas

Douglas Webber Group, Christchurch, NZ.

Website: <http://www.douglaswebber.co.nz>



Left: Kiwi
This native New Zealand bird is flightless and nocturnal.

Join Our Hockey Tour to New Zealand Sponsored by THE CANADIAN MOOSE WORLD TRAVELING HOCKEY TEAM

<http://www.canadianmoose.org>

www.internationalicehockey.co.nz



NEW ZEALAND - AOTEAROA 'Land of the Long White Cloud'



STADIUM GAMES – THE MAIN EVENTS

23 July	Auckland
30 July	Christchurch
3 August	Dunedin

The Itinerary

The Teams

CANADA ALL STARS:

Captain: Darryl Shannon*, NHL Legend
 Team: AHL, OHL, Junior, quality players

USA ALL STARS:

Captain: Mike Wilson*, NHL Legend
 Team: AHL, OHL, Junior, quality players

STADIUM GAMES – THE MAIN EVENTS

23 July Auckland
 30 July Christchurch
 3 August Dunedin

“OLD TIMERS” – THE SOCIAL TEAM:

Players over 35 who do not qualify for the above teams will play local teams and it is proposed they be the “curtain raiser” to the stadium games.

LOCAL GAMES – HOCKEY PROMOTION

Local games are currently being arranged for:

- Auckland
- Christchurch
- Tekapo
- Queenstown
- Dunedin

* If players unavailable, equivalent ex-NHL substitutes will play.

New Zealand Ice Rinks

Auckland 2
 Christchurch 1
 Dunedin 1
 Gore 1
 Queenstown 1
 Tekapo 1

Hockey Promotion

Clinics

Where possible we will run development clinics, particularly for younger players. Development clinics have been a part of the ‘Moose’ tours for the last 20 years. The Moose have also visited schools to promote hockey as a team sport to children.

Tour Organizers -

The Canadian Moose World Travelling Ice Hockey Club

The Canadian Moose were formed in 1989 to encourage development of ice hockey internationally. Over the last 20 years the ‘Moose’ have travelled to New Zealand, Australia, Scotland, England, Slovakia, Netherlands and USA to promote hockey and cultural exchange. The Moose have experienced the best in hospitality, cultural history and traditions in host countries.

In July 1998 the Moose were officially recognized by the Hockey Hall of Fame “World of Hockey” Exhibit for its efforts in developing hockey worldwide.

Lake Tekapo

(Created by a 40 foot hydroelectric dam)



Tour Schedule:

(To be confirmed)

July 19 Depart Toronto
 July 21 Arrive Auckland, NZ
 July 22 Practice; Media Event
 July 23 Auckland Stadium Game
 July 24-26 Local games & sightseeing
 July 27 To Christchurch
 July 28-29 Local games & sightseeing
 July 30 Christchurch Stadium Game
 July 31 Lake Tekapo – local game
 Aug 1 - 2 Queenstown – local game
 Aug 3 Dunedin Stadium Game
 Aug 4 Depart NZ; Arrive Toronto



Detailed itinerary available on the Canadian Moose website.

If you wish to deviate to another city or country and extend your tour, for example, flying to Hawaii, Fiji or Bali, add \$195.00 to the overall cost of the tour).

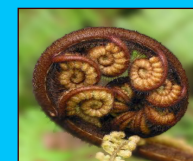
	<i>Team USA & CANADA</i>	<i>OLD-TIMERS & SUPPORTERS</i>
Tour Cost	\$2990 Includes flights, accommodations and food	\$3200 Includes flights, some accommodation & some food



The New Zealand native silver fern is used as a logo by the National NZ rugby, basketball and netball teams.



A notable prestige, and authority status symbol to the Maori. Other connotations of the Maori hook are the safe passage over water, prosperity, peace, and good luck.



The koru symbolizes new life, growth, strength and peace. The shape conveys perpetual movement; the inner shape suggests a return to the point of origin.